



**John Hall & Company**  
Commercial / Investment Property / Land  
www.JohnHallCo.com

**FOR SALE**  
**PATEL PROPERTY**  
**1.26 AC Commercial Lot**  
**Shorter, Alabama**

**ADDRESS: Main St, Shorter, Alabama 36075 (exit 22 off I-85)**

**SALE PRICE: \$499,000 PRICE REDUCED!**

**LOT SIZE: 1.26 acres**

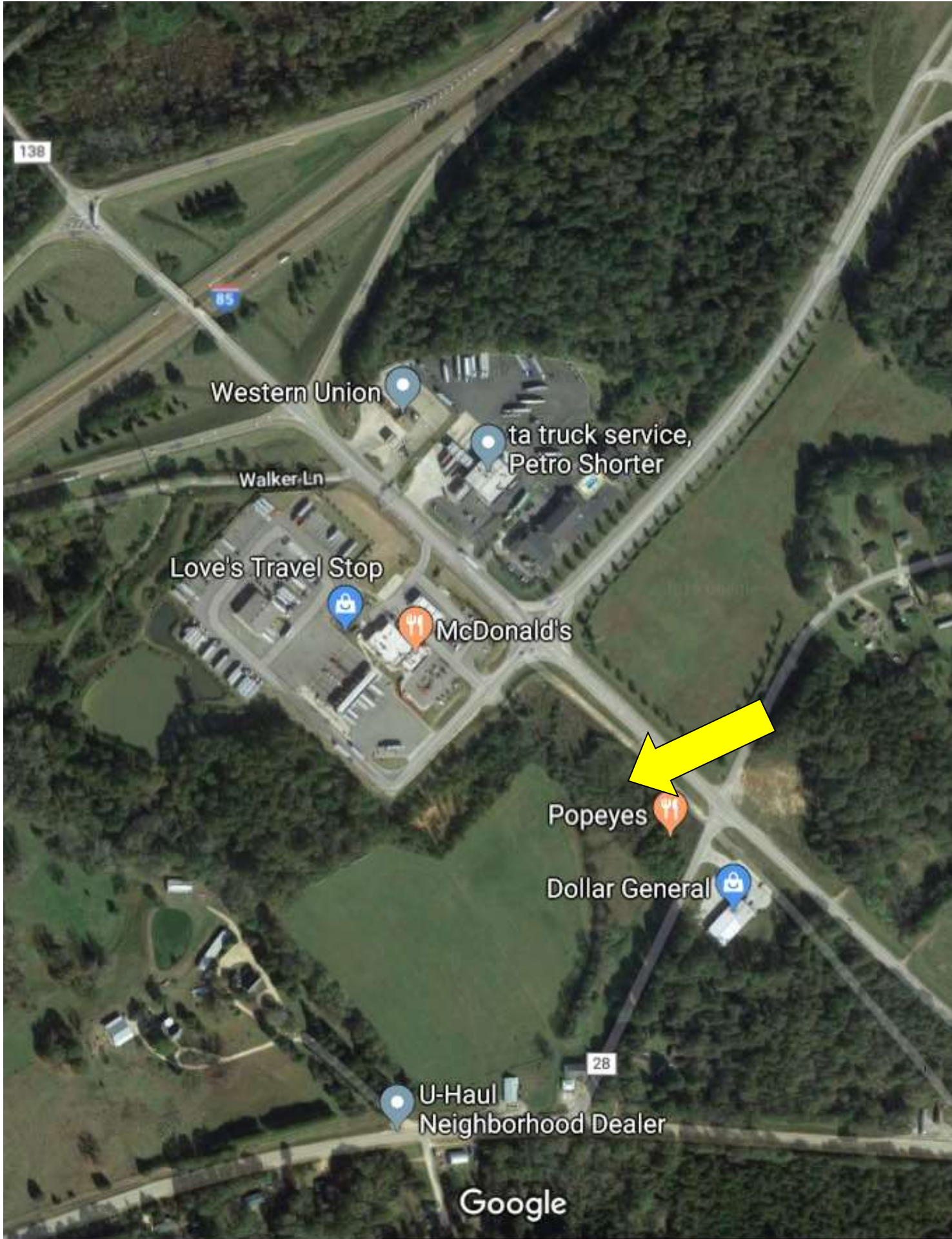
**CURRENT USE: Vacant Lot**

**CHARACTERISTICS: This is a 1.26 acre lot located on Main Street in Shorter, Alabama only ¼ mile from I-85. The lot has 249.4' of frontage and is 221.5' deep. This location is well suited for a fast food restaurant. There is a high traffic count due to the new Loves Truck Stop, McDonald's, Burger King, Popeye's Chicken and Dollar General. Victoryland Casino is only ¼ mile from this site.**

This company, or any of its agents, will not be held responsible for any false or misleading information. Information is collected by agents from sources that agent deems reliable. Agent has used his best efforts and good faith to obtain reliable information.

**TAKE EXIT 22 OFF I-85, PROPERTY IS 0.3 MILES ON YOUR RIGHT**





138

Western Union

Walker Ln

Love's Travel Stop

McDonald's

Popeyes

Dollar General

U-Haul  
Neighborhood Dealer

ta truck service,  
Petro Shorter

28

Google





AERIAL MAP

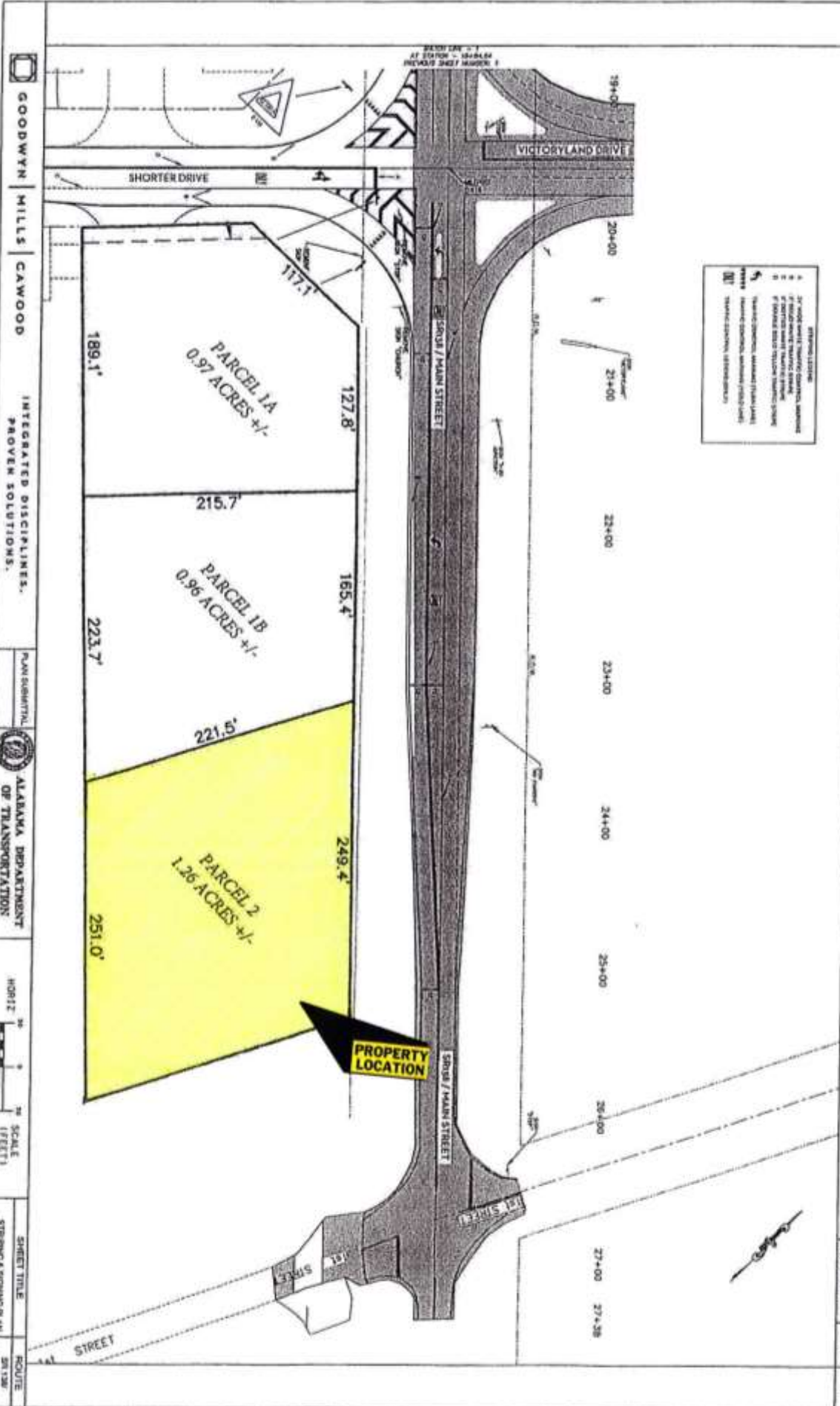
1.26 ACRES  
SHORTER, ALABAMA



# STRIPING & SIGNING PLAN

REFERENCE PROJECT NO.	2015
FISCAL YEAR	2015
SHEET NO.	13

- STRIPING LISTING**
- 1 2" ROAD MARKS (PAVEMENT COLORED, UNPAVED)
  - 2 4" ROAD MARKS (PAVEMENT COLORED, UNPAVED)
  - 3 6" ROAD MARKS (PAVEMENT COLORED, UNPAVED)
  - 4 8" ROAD MARKS (PAVEMENT COLORED, UNPAVED)
  - 5 10" ROAD MARKS (PAVEMENT COLORED, UNPAVED)
  - 6 12" ROAD MARKS (PAVEMENT COLORED, UNPAVED)
  - 7 14" ROAD MARKS (PAVEMENT COLORED, UNPAVED)
  - 8 16" ROAD MARKS (PAVEMENT COLORED, UNPAVED)
  - 9 18" ROAD MARKS (PAVEMENT COLORED, UNPAVED)
  - 10 20" ROAD MARKS (PAVEMENT COLORED, UNPAVED)
  - 11 22" ROAD MARKS (PAVEMENT COLORED, UNPAVED)
  - 12 24" ROAD MARKS (PAVEMENT COLORED, UNPAVED)
  - 13 26" ROAD MARKS (PAVEMENT COLORED, UNPAVED)
  - 14 28" ROAD MARKS (PAVEMENT COLORED, UNPAVED)
  - 15 30" ROAD MARKS (PAVEMENT COLORED, UNPAVED)
  - 16 32" ROAD MARKS (PAVEMENT COLORED, UNPAVED)
  - 17 34" ROAD MARKS (PAVEMENT COLORED, UNPAVED)
  - 18 36" ROAD MARKS (PAVEMENT COLORED, UNPAVED)
  - 19 38" ROAD MARKS (PAVEMENT COLORED, UNPAVED)
  - 20 40" ROAD MARKS (PAVEMENT COLORED, UNPAVED)
  - 21 42" ROAD MARKS (PAVEMENT COLORED, UNPAVED)
  - 22 44" ROAD MARKS (PAVEMENT COLORED, UNPAVED)
  - 23 46" ROAD MARKS (PAVEMENT COLORED, UNPAVED)
  - 24 48" ROAD MARKS (PAVEMENT COLORED, UNPAVED)
  - 25 50" ROAD MARKS (PAVEMENT COLORED, UNPAVED)
  - 26 52" ROAD MARKS (PAVEMENT COLORED, UNPAVED)
  - 27 54" ROAD MARKS (PAVEMENT COLORED, UNPAVED)
  - 28 56" ROAD MARKS (PAVEMENT COLORED, UNPAVED)
  - 29 58" ROAD MARKS (PAVEMENT COLORED, UNPAVED)
  - 30 60" ROAD MARKS (PAVEMENT COLORED, UNPAVED)



**PROPERTY LOCATION**







